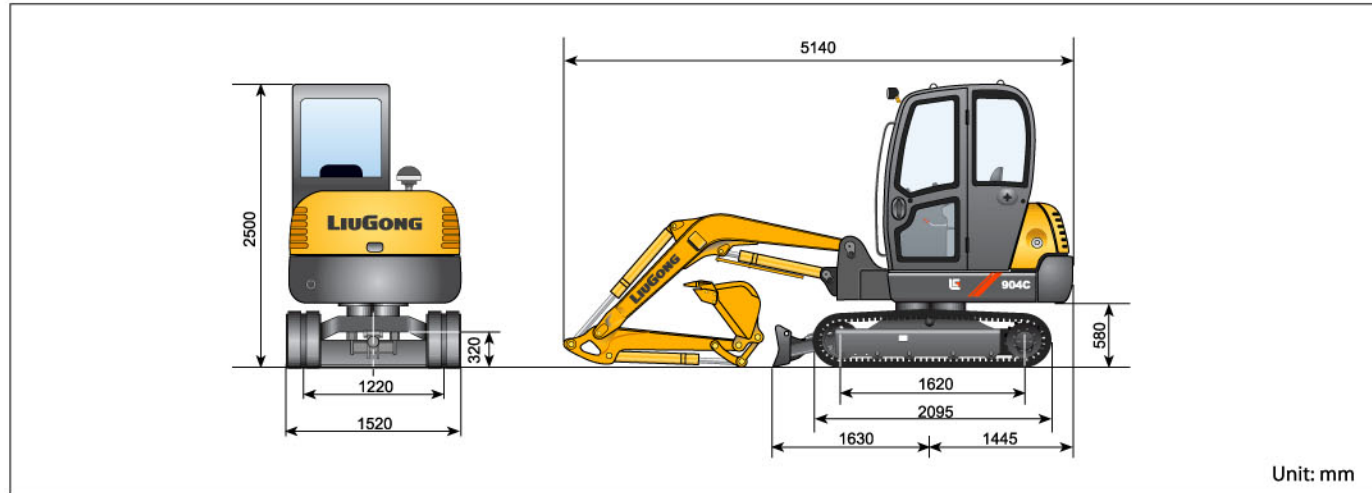
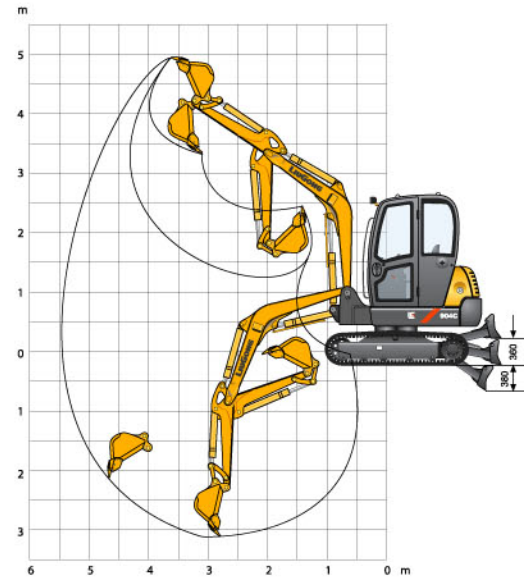


Dimensions



Working ranges



Maximum digging reach at ground level	5220 mm
Maximum digging depth	3100 mm
Maximum digging height	5000 mm
Maximum digging radius	5350 mm
Maximum dumping clearance	3600mm
Dozer blade working depth	380 mm
Dozer blade working height	360 mm
Bucket digging force	25.9 KN
Arm digging force	18.9 KN

- Please choose the appropriate bucket according to this chart

Bucket capacity (m ³)	Width (mm)		Recommended
	Without teeth	With teeth	Boom: 2600mm Arm: 1360mm
Digging bucket 0.058	385	385	<2000kg/m ³
Standard bucket 0.11	620	620	<1800kg/m ³
Enlarged bucket 0.14	650	650	<1600kg/m ³
Slit-clean bucket 0.30	1470	-	<800kg/m ³

- Reference material density
(Customers may choose the right bucket according to this form)

Material density	Reference material density
<2000kg/m ³	Solid soil, wet sand, compact wet sand, gravel pits, weathered rock (75% rock and 25% soil), wet sand and gravel, wet gravel, and a solid slag and materials.
<1800kg/m ³	Natural clay, wet clay and gravel, dry gravel (size: 1 / 4 " - 2"), broken granite, slightly moist sand, wet clay, weathered rock (50% rock and 50% soil), wet soil, soft mud flows, dry sand and gravel, broken slag, gypsum block pieces and materials.
<1600kg/m ³	Stem-dug clay, dry gravel, broken sandstone, dry-compacting soil, limestone, broken pieces weathered rock (25% rock and 75% soil), rock pieces, and gypsum broken block and materials.

① Materials and specifications are subject to change without notice.
② Machines shown may include optional equipment. For more information, please consult our local dealers.

Guangxi Liugong Machinery Co.,Ltd.
No.1, Liutai Road, Liuzhou, Guangxi, China
Postcode: 545007
T+86 772 3886124 3886125
F+86 772 3886122
www.liugong.com
overseas@liugong.com

OBL904C-0904, Printed in China

LIUGONG
Shaping the Future Together

CLG904C
Hydraulic Excavator

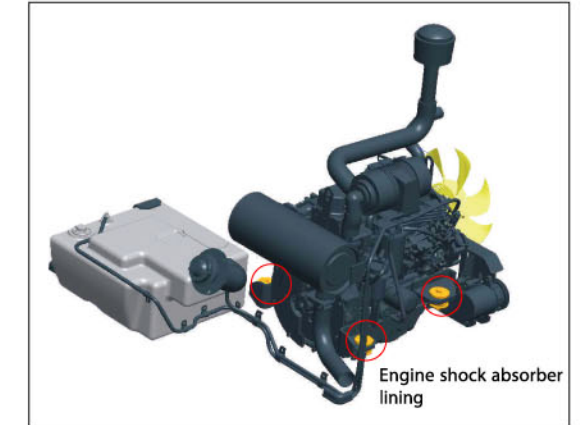


Bucket Capacity 0.058-0.3m³
Rated Power 27.1kW/2200r/min
Net Power 25.2kW/2200r/min
Operating Weight 4000kg



Comfortable and convenient operation environment

- Streamlined and aesthetic appearance, CLG904C is a scenic sight wherever it is.
- Fluorine-free large-capacity air-conditioner with dual air vents and internal temperature control microprocessor.
- Specially designed shock absorbing rubber pad located at the engine seat reduces engine vibration and specially designed cab shock absorbing mountings reduces noise in the cab.
- Audio entertainment system relaxing the operator during long hours of operation.
- Skylight gives the driver wide visibility and improves the ventilation.



Easy and smart

- The pilot joystick is very sensitive and easy to operate, it can accurately control the movement of the boom and bucket.

1. Pilot control joystick
2. Pilot control handspike
3. Timing handspike
4. Security lock spike
5. Air conditioner
6. Audio equipment
7. Emergency escape hammer
8. Instruments





Smart and variable

A portable machine

- CLG904C is portable and applies to different work condition ,such as Irrigation, construction, civic road construction and maintenance, and other narrow and complex working environment.

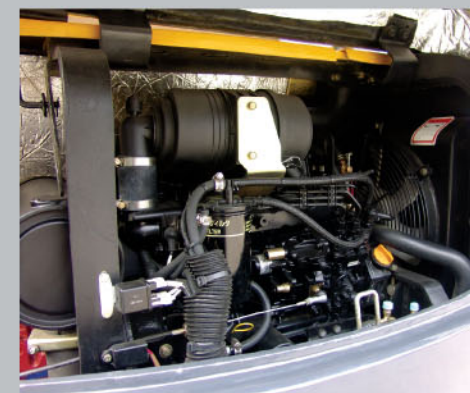
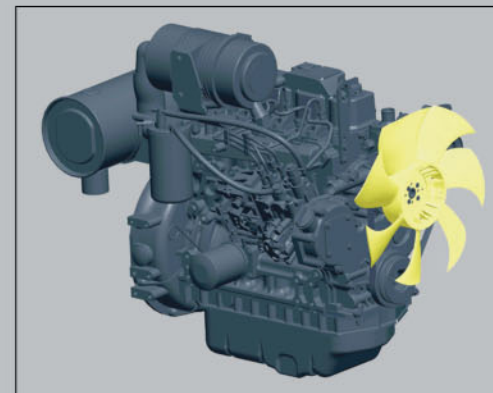
Various attachments

- With CLG904C, you can customize your working attachments, such as enlarged bucket, strengthened bucket, narrow bucket, standard bucket, standard arm, wide track, rubber track, hammer, quick-coupler and so on, all of which increase your working efficiency.



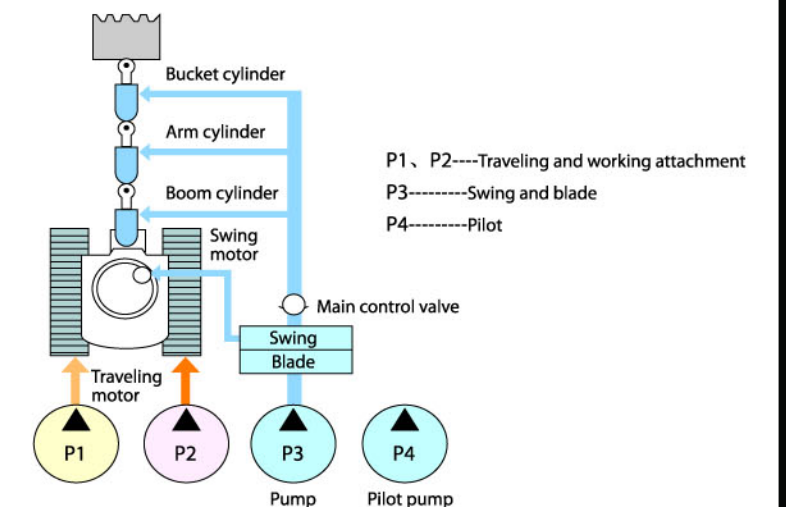
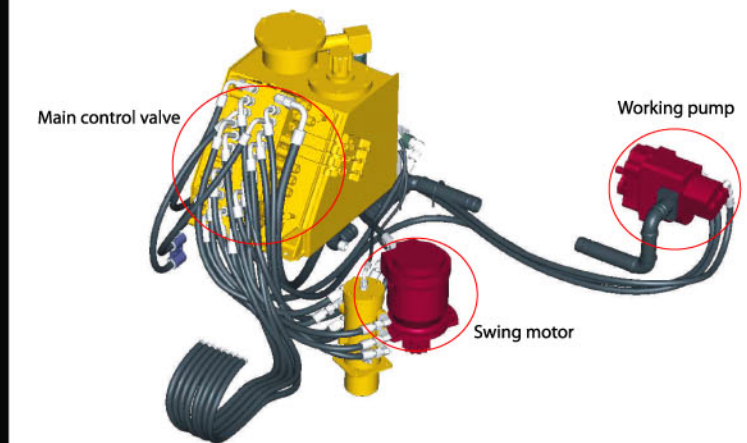
Powerful engine

- Water cooled, four-cylinder, four-stroke diesel engine.
- High reliability, low fuel consumption, low noise, low vibration, low emissions.
- Meets european stage IIIA and american Tier2 standards for non-highway use vehicles. It's a high-performance and environmentally friendly engine.



Advanced hydraulic system

- The 4 pump system allows the working and traveling system to work separately and enables the machine to move in a straight-line at normal speed even when the working attachments are performing two different actions at the same time, such as simultaneous boom, arm and bucket movement.
- Auxiliary ports provide for linking hydraulic working attachments, such as a hydraulic hammer.





Easy access for maintenance



- Ground level access makes inspection and service quick and easy.
- Filter for fuel keeps the fuel tank clean and protects the engine from being damaged by fuel impurities.
- Fuel cover and counterweight are connected scientifically, preventing vibration and insuring longer life of the machine.
- Air pre-filter provides the engine clean air.
- Convenient to refuel, fuel refill pipe located right behind the cab and refueling can be done on the ground.



Specifications



Engine

Model	Yanmar 4TNV88
Type	4-cylinder, 4-stroke, in line water-cooled diesel engine
Rated power	27.1kW/2200r/min
Net power	25.2kW/2200r/min
Maximum torque.....	144N.M
Displacement.....	2.19L



Undercarriage

Welded heavy load undercarriage frame ensures outstanding durability in the toughest condition. Idlers, carrier rollers, track rollers are sealed with a floating oil seal providing extended service life

Number of carrier rollers.....	1 each side
Number of track rollers.....	4 each side
Number of idlers	1 each side
Number of shoes..82 each side(rubber)/44 each side(steel)	
Width of track	300mm



Service Refill Capacities

Fuel tank	55L
Coolant.....	9L
Engine lubricants.....	6.5L
Hydraulic system.....	75L
Hydraulic tank.....	58L



Swing System

High torque motor and two planetary reduction drive motors with a mechanical brake inside the motor that engages automatically when the joystick is centered.

Swing speed	10.8r/min
-------------------	-----------



Hydraulic System

Main pump	2 piston pumps + gear pumps
Maximum flow	2 x 43+34.7L/min
Main relief valve pressure	20.6MPa
Maximum pressure of working attachments	20.6MPa
Maximum pressure of swing circuit.....	20.6MPa
Maximum pressure of travel circuit.....	20.6MPa
Main relief valve boom/arm/bucket	26.5MPa
Pilot circuit.....	3.9MPa



Drives & Brakes

Pilot control has two levels with integrated pedals for precise steering control. The motors and hydraulic pipelines are set inside the track system to prolong their working life. Parking brake and shock-absorbing valves are installed in the motor for stable traveling and reliable braking.

Travel speed	High: 0-5.2km/h, low: 0-3.5km/h
Gradeability	30°(58%)



Control System

All working movement are controlled by a hydraulic pilot system. The right-hand lever controls the boom and bucket movement while the left-hand lever controls the arm and swing. The two foot-controlled pilot valves with integrated hand levers control travel direction and swing direction. Travel speed is charged by an electric switch.