



Shaping the Future Together

# 922LC

## Hydraulic Excavator

### Meets Tier 3/Stage IIIA Emission

Bucket Capacity	1.25 yd <sup>3</sup> (0.95 m <sup>3</sup> )
Rated Power	155 hp (116 kW)@2000 rpm
Operating Weight	46297 lb (21000 kg)



GUANGXI LIUGONG MACHINERY CO., LTD.  
No.1 Liutai Road, Liuzhou, Guangxi  
China 545007  
T +86 772 3886124 3886125  
F +86 772 3886122  
[www.liugong.com](http://www.liugong.com)  
[overseas@liugong.com](mailto:overseas@liugong.com)

LIUGONG CONSTRUCTION MACHINERY N.A., LLC  
1400 Broadfield Boulevard, Suite 200, Houston, Texas  
USA 77084  
T: +1 281-579-8882  
F: +1 281-579-8388



# CLG922LC Hydraulic Excavator



## Engine

Model	CUMMINS QSB6.7-C155
Type	6-cylinder, 4-stroke cycle, direction, electronic controlled turbocharged diesel engine
Rated power	155 hp (116 kW)@2000 rpm
Net power	142 hp (105.6 kW)@2000 rpm
Max. torque	4.56 lb.ft (618 N.m)/1100 r/min
Bore x stroke	4" x 4" (102 x 120 mm)
Displacement	409 in <sup>3</sup> (6.5 L)

## Hydraulic System

Main pump	Two variable displacement piston pumps
Maximum flow	2 x 52.8 gal/min (2 x 200 L/min)
Pilot pump	Gear pump
Implement circuits	4612 psi (31.8 MPa)
Power boost / heavy lift	4978 psi (34.3 MPa)
Swing circuits	3698 psi (25.5 MPa)
Travel circuit	5975 psi (41.2 MPa)
Pilot circuit	565 psi (3.9 MPa)
Swing speed	11.3 r/min
Travel speed	High:0~4.9 km/h(0~3.45 mph), Low:0~2.9 km/h(0~1.80 mph)
Gradeability	35 <sup>o</sup> (70%)

## Undercarriage

Number of carrier rollers	2 each side
Number of track rollers	8 each side
Number of idler rollers	1 each side
Number of shoes	49 each side
Width of track shoes	600 mm (1'11") or 800 mm (2' 7")

## Capacities

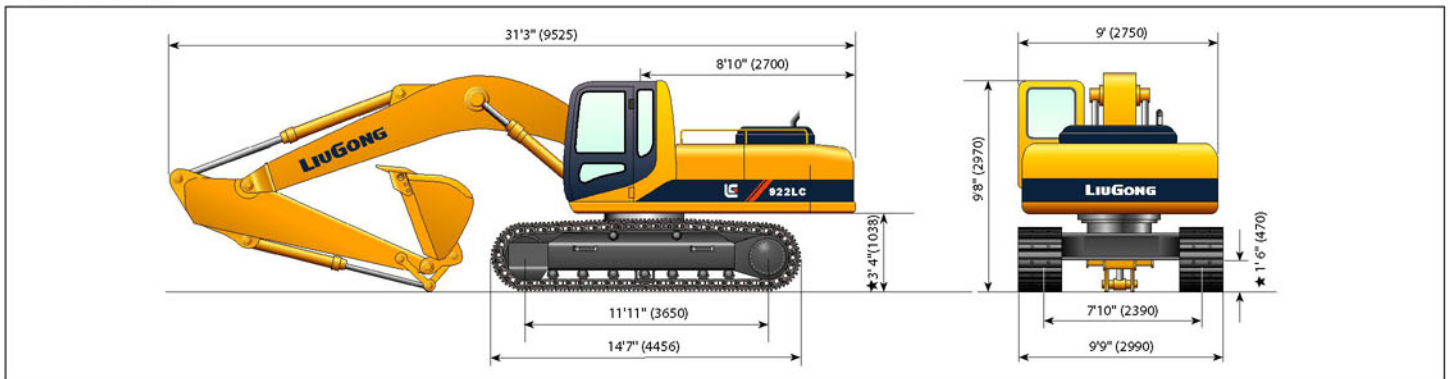
Fuel tank	88.5 gal (335 L)
Coolant	7.9 gal (30 L)
Engine lubricants	4.7 gal (18 L)
Swing drive	0.9 gal (3.4 L)
Final drive	each side 1.45 x 2 gal(5.5 L x 2 L)
Hydraulic system	68.7 gal (260 L)
Hydraulic tank	42.3 gal (160 L)

## Working Ranges

Max. loading height	22'1" (6750 mm)
Max. cutting height	31'2" (9520 mm)
Max. digging depth	21'9" (6635 mm)
Max. digging radius	32'3" (9850 mm)
Min. turning radius	11'1" (3400 mm)
Max. bucket digging force (SAE)	31473 lb (140 kN)
Max. arm digging force (SAE)	22256 lb (99 kN)
Max. bucket digging force (SAE)	28776 lb (128 kN)
Max.bucket digging force (SAE, power boost)	31473 ib (140 kN)
Max. arm digging force (SAE)	20458 ib (91 kN)
Max. arm digging force (SAE, power boost)	22256 ib (99 kN)

Hoisting height (in/m)	Hoisting Radius											
	118(23m)		157(4m)		196(5m)		236(6m)		275(7m)		314(8m)	
	Vertical (lb/kg)	Lateral (lb/kg)	Vertical (lb/kg)	Lateral (lb/kg)	Vertical (lb/kg)	Lateral (lb/kg)	Vertical (lb/kg)	Lateral (lb/kg)	Vertical (lb/kg)	Lateral (lb/kg)	Vertical (lb/kg)	Lateral (lb/kg)
236 (6m)							8064	8064	8288	8108		
196 (5m)							3600	3600	3700	3620		
157 (4m)					10707	10707	8736	8736	8601	7996		
118 (3m)	22198	22198	15836	15836	4780	4780	3900	3900	3840	3570	8960	6115
78 (2m)	9910	9910	7070	7070	12835	12835	9811	9833	9228	7795	4000	2730
39 (1m)	29478	27014	19555	17292	5730	5730	4380	4380	4120	3480	9430	5980
(0m)	13160	12060	8730	7720	15030	12342	11110	9744	10057	7548	4210	2670
-39 (-1m)	33443	25737	22489	16396	6710	5510	12521	9318	10976	7302	9990	5824
-78 (-2m)	14930	11490	10040	7320	16979	11782	5590	4160	4900	3260	4460	2600
(-3m)	34068	25356	24259	15904	7580	5260	13820	8960	11849	7056	9990	5689
(-4m)	15450	11320	10830	7100	18390	11401	6170	4000	5290	3150	4460	2540
	34451	25356	24976	15702	8210	5090	14851	8691	12163	6876	9878	5129
	15380	11320	11150	7010	19174	11177	6630	3880	5430	3070	4410	2490
	33465	25536	24864	15702	8560	4990	15321	8534	12028	6764	9811	5510
	14940	11400	11100	7010	19398	11110	6840	3810	5370	3020	4380	2460
	31651	25872	23945	15859	8660	4960	15254	8467	12006	6742		
	14130	11550	10690	7080	18905	11200	6810	3780	5360	3010		
			22086	16150	8440	5000	15321	8512	12096	6809		
			9860	7210	8440	5000	6840	3800	5400	3040		
					7830	5090	6290	3890				

## Dimensions



Specifications and design are subject to change without prior notice. Machines shown may include optional equipment.